



Sankosha Finishing Solutions
Dry Cleaning / Baggers

DF-100U Rotary Form Finisher

Superior Quality



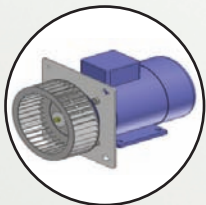
Up and Down

Handles various sized garments (up to 70").

Soft Tensioning Body 2-Step Up Function

This unique design feature allows for the body to raise up slowly to avoid overstretching.

Sleeve Pocket



Blower Motor Power Increased By 50%

This important upgrade will provide much better finishing quality especially for wetcleaned garments.



Body Rotation

Easier to load, saves time.

Operator-Friendly Display Panel

Better
Visibility/Operation

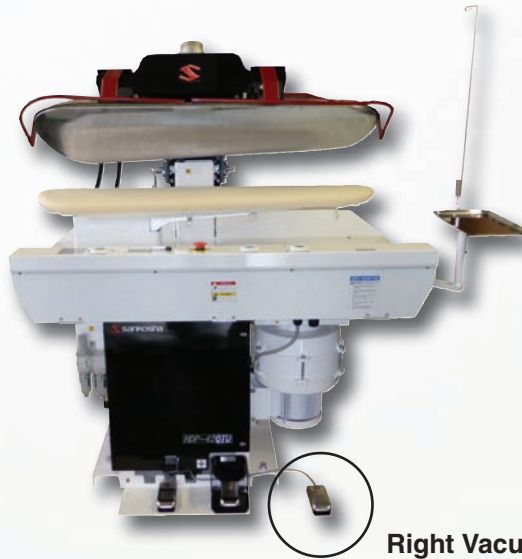
DF-050U Form Finisher

Proven Pressing Technology



- Smaller Body
- Compact Footprint
- Operator Friendly Control Panel
- Sleeve Pocket

HDP-420TU Utility Hot Head Press

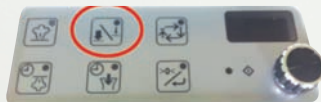


Right Vacuum Pedal

Easy for vacuum operation when using the narrow end of the lower buck.

Flexibility

With the touch of a button you can finish any type of garment with a firm or delicate finish. Both auto and manual modes allow the operator flexibility at the press of a button.



Trustworthy Performance



Faster & Smoother!

- Surface area evenly pressed
- Dual Press Pressure (Hard or Soft)
- Self Contained Vacuum
- Adjustable Dial for Vacuum & Blower
- Can press a wider range of fabrics
- SLEEVE BOARD OPTION AVAILABLE

Adjustable Blower/Vacuum

Both presses utilize an inverter controlled inline motor for both up air and vacuum giving the operator control to press every garment precisely.

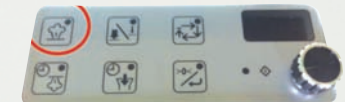


DP-420TU Utility Press



Buck Press Steam Switch

During the pressing cycle, you can inject steam from the buck in addition to the head steam.



DF-740U Tensioning Pants Topper

Maximum Productivity

New Inverter Option

Change the blower power by turning a dial providing the correct finishing option for each fabric.

New Steam Injection Design

This newly design feature distributes more efficient heat throughout the buck.



Tensioning Cuff Function

This improved function in combination with the additional blower power supplies optimal performance.

Radiator Upgrade

With a 50% power improvement, the highest possible productivity can be achieved.

State of the Art Control Panel

User Friendly—located in one accessible area including a digital timer and a new counter function.

Increased Blower Power

A more powerful blower motor will result in faster drying times.

DP-610TU Utility Legger Press



HDP-610TU Utility Hot Head Press



NEW! SDP-880U
Double Legger Press



- High Productivity
- Quality creases for both legs of pants
- Can also be used for touch up work and skirt finishing
- Easy to Set Pants
- Built in Safety Features
- Has a true middle press with vacuum

DF-870U
Double Legger Press

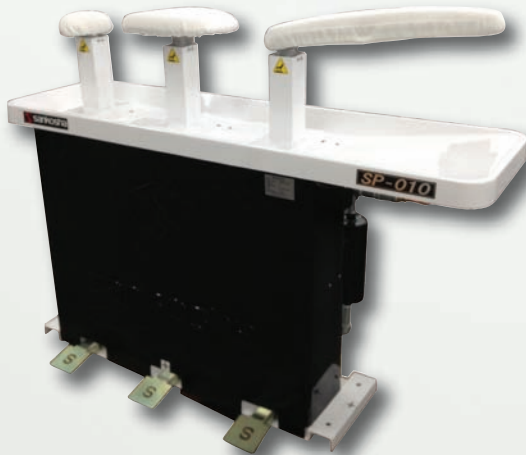


- Perfect Seam Line
- Press Pressure (Khaki or Dress)
- Presses both legs at once providing greater productivity



NEW! SP-010
Triple Puff Irons

(Also available in Single)



- Instant & Consistent Steam
- User Friendly Table
- Perfect Sized Foot Pedals



User Friendly Table

Baggers

Reduce Labor = Increase Profits

PS-290U Automatic



- Flagship Model
- Load from Either Side
- New User Friendly Control Panel
- 240 Bundles/Hour
- Worry Free Operation
- Auto Feed/Discharge

NEW! PS-290HU Industrial Automatic (Heavy Duty)



- Perfect for Uniforms, Dresses & Long Coats - Up to 58½"
- Bulk Packaging
- Upgraded Transfer Carriage Can Handle up to 17lbs.
- 240 Bundles/Hour
- Worry Free Operation

NEW! PM-470U Semi-Automatic



- High Speed Bagging
- Oversized Garments
- 2 Button Operation
- Anti Static Function
- Bulk Packaging



- Increases Your Profits & Efficiency
- Easy to Add to Your Production Line
- Loads from Either Side

Machine Specifications

Product Name	Double Legger Press		Triple Puff Irons
Model	DP-870U	SDP-880U	SP-010
Power	3ph 220V	1ph 220V	
Power Consumption	2.8A	4.0A	
Finishing Capacity	90 pants / hr	90 pants / hr	
Weight	770 lbs. / 350 kg	1,056 lbs. / 480 kg	275 lbs. / 125 kg
Air Consumption	0.8 cfm	0.5 cfm	
Steam Consumption	2 BHP	2 BHP	
Air Pressure	85 psi / 0.6 MPa	85 psi / 0.6 MPa	
Steam Pressure	85 psi / 0.6 MPa	85 psi / 0.6 MPa	
Air Connection	3/8B	3/8B	
Steam Connection	Inlet: 1/2B, Outlet: 1/2B	Inlet: 1/2B, Outlet: 1/2B	Inlet: 1/2B, Outlet: 1/2B
Dimension (W x D x H) (inch)	67" x 41.8" x 61.1"	74 3/4" x 40 1/4" x 58 3/4"	61" x 47" x 28"

Product Name	Semi-Automatic Bagging Machine	Automatic Bagging Machine	Automatic Bagging Machine
Model	PM-470U	PS-290U	PS-290HU
Poly Width	28"	28"	28"
Power	3ph 220V	3ph 220V	3ph 220V
Power Consumption	8.0A	9.0A	9.0A
Finishing Capacity	470 bagging / hr	240 bagging / hr	240 bagging / hr
Weight	605 lbs. / 275 kg	726 lbs. / 330 kg	770 lbs. / 350 kg
Air Consumption	1.7 cfm	1.7 cfm	1.7 cfm
Air Pressure	85 psi / 0.6 MPa	85 psi / 0.6 MPa	85 psi / 0.6 MPa
Air Connection	3/8B	1/4B	3/8B
Dimension (W x D x H) (inch)	36 1/2" x 36 1/2" x 80 3/4"	66.9" x 52.4" x 81.9"	68" x 52 1/2" x 89 1/2"

Product Name	Tensioning Pants Topper
Model	DF-740U
Power	1ph 220V
Power Consumption	4.0A
Weight	298 lbs. / 135 kg
Air Consumption	0.01 cfm
Steam Consumption	2 BHP
Air Pressure	85 psi / 0.6 MPa
Steam Pressure	73 psi / 0.5 MPa
Air Pipe	1/4B
Steam Pipe	Inlet: 1/2B, Outlet: 1/2B
Noise Level	A Level: 72dB / C Level: 82dB
Dimension (W x D x H) (inch)	28.7" x 50" x 67.3"

Product Name	Rotary Form Finisher	Form Finisher
Model	DF-100U	DF-050U
Capacity	Up to 60 pcs / hr	Up to 60 pcs / hr
Power	1ph 220V	1ph 220V
Power Consumption	6.0A	6.0A
Air Pressure	73 psi / 0.5 MPa	73 psi / 0.5 MPa
Air Consumption	0.2 cfm	0.18 cfm
Air Pipe	1/4B	1/4B
Steam Pressure	73 psi / 0.5 MPa	73 psi / 0.5 MPa
Steam Consumption	2 BHP	2 BHP
Steam Pipe	Inlet: 1/2B, Outlet: 1/2B	Inlet: 1/2B, Outlet: 1/2B
Noise Level	A Level: 77dB / A Level: 80.3dB	A Level: 77dB / A Level: 80.3dB
Weight	363 lbs. / 165 kg	225 lbs. / 100 kg
Dimension (W x D x H) (inch)	41 3/8" x 37 3/8" x 84 5/8"	29.1" x 28.3" x 80.3"

Product Name	Utility Legger	Utility
Model	(H)DP-610TU	(H)DP-420TU
Power	1ph 220V	1ph 220V
Power Consumption	2.8A	2.8A
Air Consumption	0.5 cfm	0.5 cfm
Steam Consumption	1.5 BHP	1.5 BHP
Air Pressure	73 psi / 0.5 MPa	73 psi / 0.5 MPa
Steam Pressure	73 psi / 0.5 MPa	73 psi / 0.5 MPa
Air Pipe	3/8B	3/8B
Steam Pipe	Inlet: 1/2B, Outet: 1/2B	Inlet: 1/2B, Outet: 1/2B
Noise Level	A Level: 72dB / A Level: 77dB	A Level: 72dB / A Level: 77dB
Weight	772 lbs. / 350 kg	739 lbs. / 335 kg
Dimension (W x D x H) (inch)	75.2" x 39.6" x 60.6"	63.4" x 37.4" x 60.6"



Best Dressed™

SANKOSHA U.S.A., Inc.

1901 Landmeier Rd., Elk Grove Village, IL 60007 • TOLL FREE: (888) 427-9120 • TEL: (847) 427-9120 • FAX: (847) 427-9634

<http://www.sankosha-inc.com>

